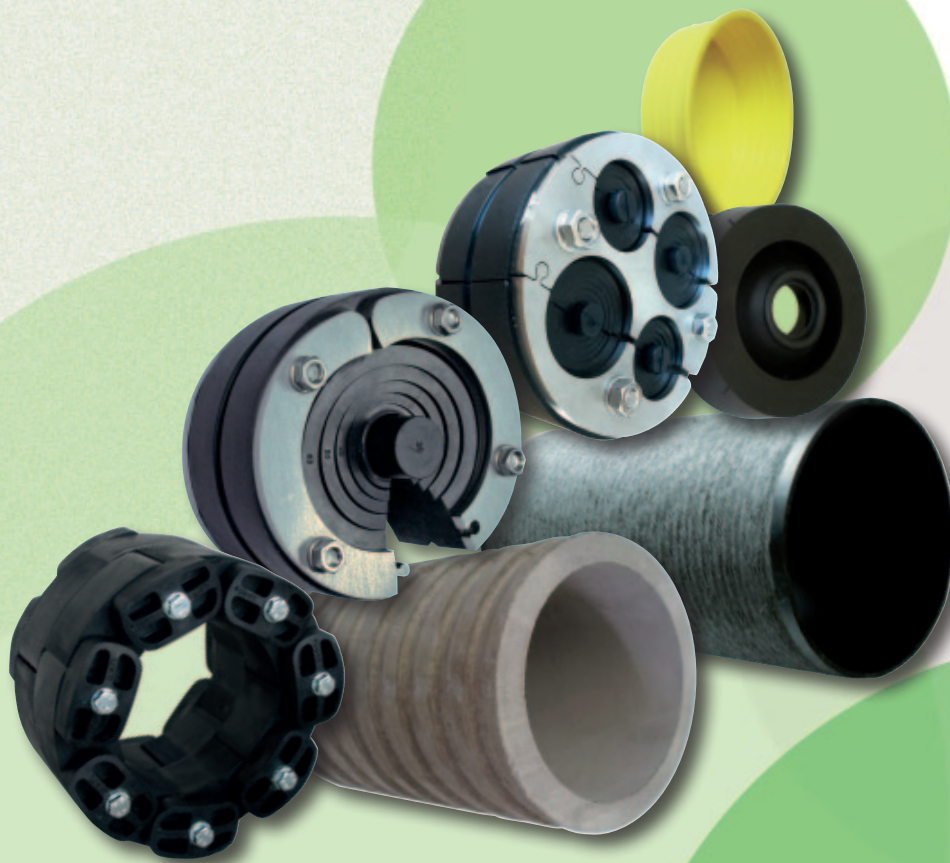




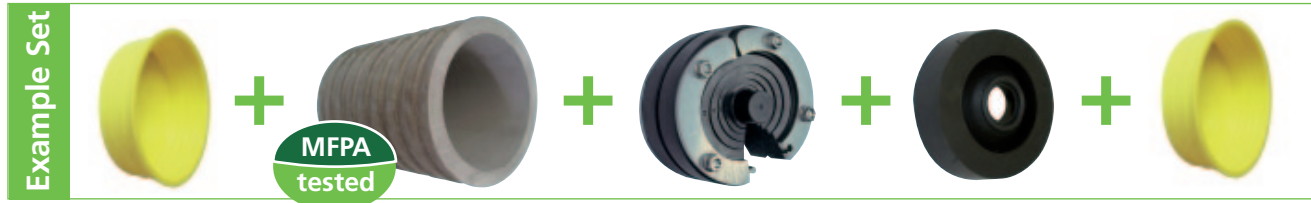
Pipeline Accessories



Wall Penetration **SETS** 4 pipes

Wall penetration sets 4 pipes

Wall penetration seal, wall sleeve and mounting caps supplied as complete kits.
For easy and safe wall penetration of service pipes and cables.



The proven wall-penetration-system made of wall sleeve and 4 pipes Pressio® wall seals is now also available as a complete kit. In addition, there are two mounting caps to close the wall sleeve during the casting process.

An optimised seal to the pipe or cable is provided by one of the following versions of our 4 pipes Pressio® wall penetration seals.

Our PVC or fiber cement wall sleeves will shape a perfect wall opening. The sleeves provides a special surface on the outside with grooving to ensure the bond with the wall cement.

Technical data and material properties

of seals can be found at the individual technical datasheets

- Pressio®-Rings wall penetration seals 4 pipes
- Wall penetration seals Pressio® 4 cables®
- Pressio®-Elements wall penetration seals 4 pipes

Core hole ID	Pressio® Wall Penetration Seal	Rubber support ring	Wall sleeve	Moun-ting cap	Art.-No.
--------------	--------------------------------	---------------------	-------------	---------------	----------






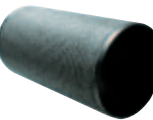


Standard sets with PVC wall sleeve:

100 mm	2 pcs. - Pressio® Universal 18-65 mm (closed)	/	1 pc. - PVC	2 pcs.	28300
	1 pc. - Pressio® Universal 18-65 mm (closed)	1 pc.			28301
	2 pcs. - Pressio® Universal 18-65 mm (split)	/			28302
	1 pc. - Pressio® Universal 18-65 mm (split)	1 pc.			28303
	2 pcs. - Pressio® 4 cables® UNIVERSAL (split)	/			28312
	1 pc. - Pressio 4 cables UNIVERSAL (split)	1 pc.			28313
150 mm	7 pcs. Pressio® - Elements IL 310 S 316, EPDM	/			28320
200 mm	10 pcs. Pressio® - Elements IL 310 S 316, EPDM	/			28330

Standard sets with fiber cement wall sleeve:

100 mm	2 pcs. - Pressio® Universal 18-65 mm (closed)	/	1 pc. - Fiber cement	2 pcs.	28350
	1 pc. - Pressio® Universal 18-65 mm (closed)	1 pc.			28351
	2 pcs. - Pressio® Universal 18-65 mm (split)	/			28352
	2 pcs. - Pressio® 4 cables® UNIVERSAL (split)	/			28353
	1 pc. - Pressio® 4 cables® UNIVERSAL (split)	1 pc.			28354
150 mm	7 pcs. Pressio® - Elements IL 310 S 316, EPDM	/			28360
200 mm	10 pcs. Pressio® - Elements IL 310 S 316, EPDM	/			28370

Components:

	Pressio® Universal 100 / 18-65 mm V2A closed version (with onion-ring technology)		Pressio®-Elements Wall Penetration Seal IL 310 S 316, EPDM, 50 ±5 Shore A Bolts V4A (7 or 10 elements) (105-114 mm or 155-164 mm)		Fiber Cement Wall Sleeve ID 100 / 150 / 200 mm Length 250 mm
	Pressio® Universal 100 / 18-65 mm V2A split version (with onion-ring technology)		Pressio® 4 cables® UNIVERSAL 100 / 2 x 6-32 mm, 2 x 6-25 mm V2A split version (with onion-ring technology)		PVC - Wall Sleeve ID 100 / 150 / 200 mm Length 400 mm
	Rubber Support Ring 100 / 32-40 mm		Mounting Cap PE for Wall Sleeve DN 100 / DN 150 / DN 200		