

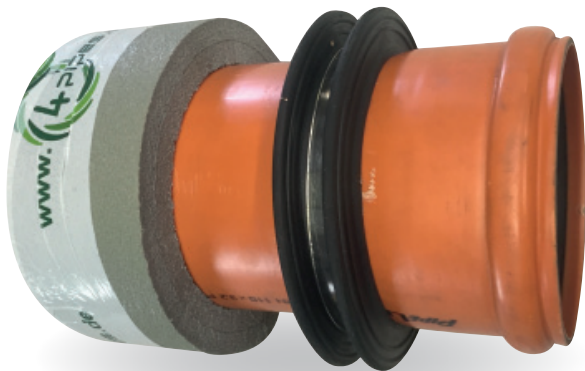


Pipeline Accessories

Wall and Baseplate  
Pipe Penetration  
4 pipes



# Wall and Baseplate Pipe Penetration KG/KG2000 4 pipes



resistant to  
5 bar



## Wall and baseplate pipe penetration KG / KG2000

Wall and baseplate pipe penetrations 4 pipes are solutions to provide a tight seal against high external water pressure from outside a structure, in the case that a pipe is directly cast into watertight concrete.

The preassembled set contains the piece of pipe, a tight double wall collar and an end cap for uncomplicated application. The required concrete cover of the wall collar is to be considered depending on the concrete quality. We recommend a coverage of min. 40 mm for waterproof concrete.

### Application

- In the formwork for casting in concrete
- Wall penetrations in structures
- Manhole sewer penetrations
- In the baseplate of a building

### Advantages

- Integrated double wall collar saves application time
- Double wall collar 4 pipes is approved and certified against 5 bar high external water/gas pressure
- Length adjustable on site
- Attached foam spacer allows later connection to the spigot
- Supplied incl. blind plugs for the bell side

### Product range

- Pipe PVC KG and PP KG2000 (other on request)
- Dimensions OD 110, 125, 160, 200 mm

### Wall penetrations:

- For wall thicknesses 240 mm to 500 mm
- Other pipe qualities (e.g. HT-pipe) dimensions and length on request

### Baseplate penetrations:

- Standard length 500 mm
- Other pipe qualities (e.g. HT-pipe) dimensions and length on request

### Application

1. Cut penetrating pipe to length if necessary
2. Insert into the cast. The wall collar should be in the middle of the concrete formwork, fully covered
3. The sealing ring in the bell must be cleaned and lubricated properly before inserting the next pipes

## Baseplate pipe penetration 4 pipes

	Pipe OD mm	Art.-No.
<b>KG2000 pipe (PP green)</b>	110	27728
	125	27729
	160	27730
	200	27731
<b>KG pipe (PVC orange)</b>	110	27732
	125	27733
	160	27734
	200	27735

## Wall penetration 4 pipes

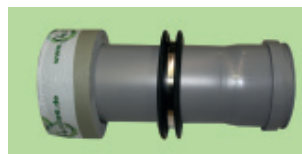
	Pipe OD mm	possible length	Art.-No.
<b>KG2000 pipe (PP green)</b>	110	200 – 560 mm	27704
	125	200 – 560 mm	27705
	160	300 – 580 mm	27706
	200	300 – 600 mm	27707
<b>KG pipe (PVC orange)</b>	110	200 – 560 mm	27708
	125	200 – 560 mm	27709
	160	300 – 580 mm	27710
	200	300 – 600 mm	27711

Supplied incl. end cap and preassembled double wall-collar, tight against high external water pressure.

### On request:



Wall pipe penetration with bell on both side



Wall pipe penetration made of HT-pp-pipes grey



Baseplate pipe penetration incl. glue-on flange