

Installation guide

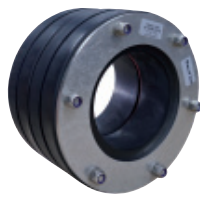
Pressio®-Rings wall penetration seals 4 pipes



Standard



Standard split



Standard Type FW



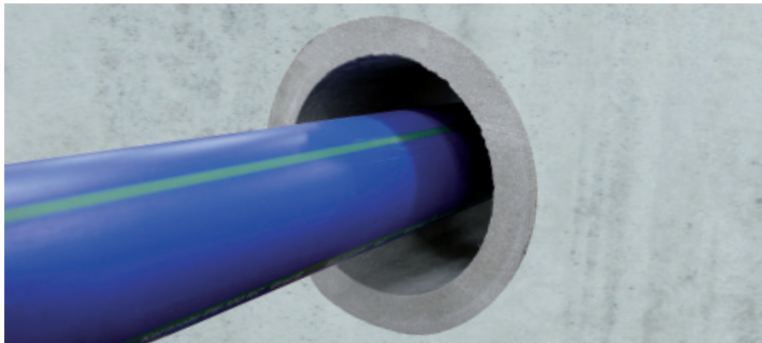
BlackLine split



BlackLine Type FW split

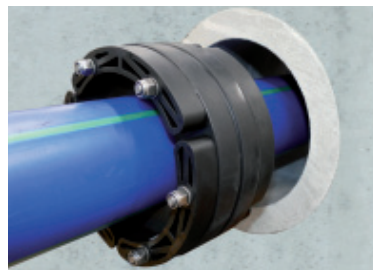
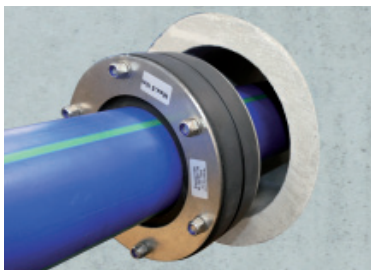


Individual closed/split



1. Clean the casing pipe/core bore and carrier pipe.

2. Check the casing pipe/core bore diameter and carrier pipe diameter against sealing range data written on the Pressio® seal.



3. Push the seal on the carrier pipe.

Attention: Orientation of the nuts towards the inside of the building for later retightening.



4a



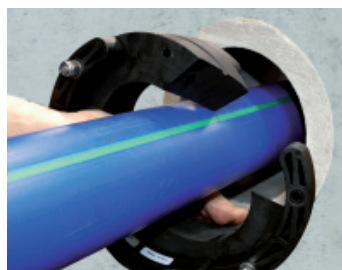
4b

4a **Type Standard split:**

Dismantle the seal at the split section.

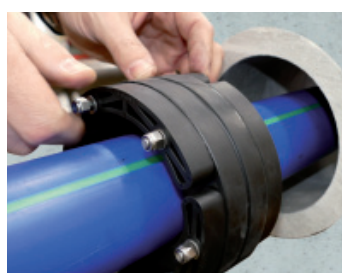
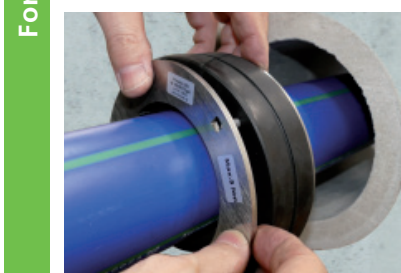
4b **Type BlackLine split:**

Remove **only one bolt** at the split section.



5. Fold the split seal around the carrier pipe.

Attention: Orientation of the nuts towards the inside of the building for later retightening.

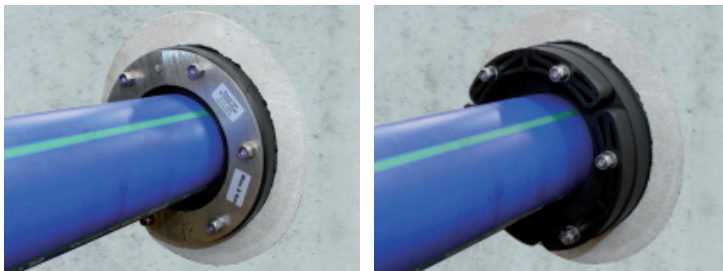


6. Reassemble the Pressio® seal on the carrier pipe.

For subsequent installation

Installation guide

Pressio®-Rings wall penetration seals 4 pipes



7. Push the Pressio® seal into the casing pipe or the core bore.



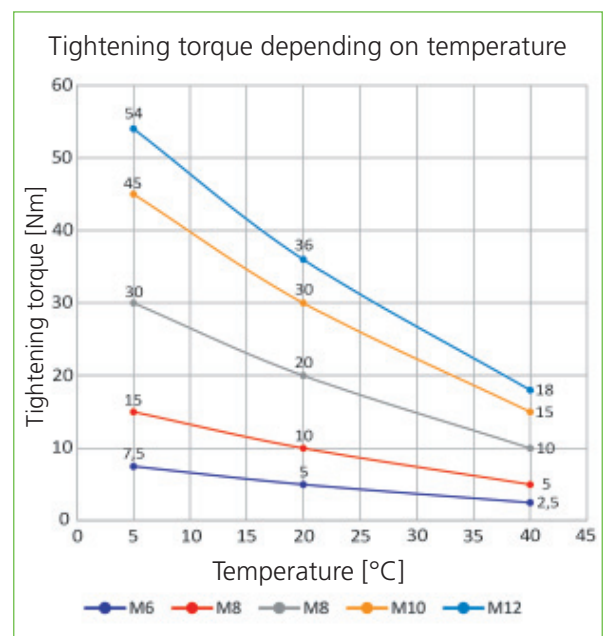
8. Insert the Pressio® seal into the wall and place it flush with the outside of the building.



9. Use a torque wrench to tighten the nuts according to the below table.

Attention: Tighten the nuts in a clockwise pattern. Each nut is to be turned approx. three times. Several passes will be necessary until the torque value is achieved. If necessary, retighten the nuts after 2 hours until the torque is reached.

Max. tightening torques in Nm		
Bolt	Standard pipes	For thin-walled plastic pipes
M 6	5 Nm	5 Nm
M 8	10 Nm for Pressio® Standard, Standard split, Standard Type FW and BlackLine	8 Nm for Pressio® Standard, Standard split, Standard Type FW and BlackLine
	20 Nm for Pressio® Individual and Pressio® Type KTW/W270	15 Nm for Pressio® Individual
M 10	30 Nm	22 Nm
M 12	36 Nm	26 Nm



The 4 pipes warranty is limited to the replacement of faulty material. The usability of the product for the individual application is completely the responsibility of the user.



Installation video

Installation guide

Pressio® Universal wall penetration seals 4 pipes



Standard UNIVERSAL
closed/split



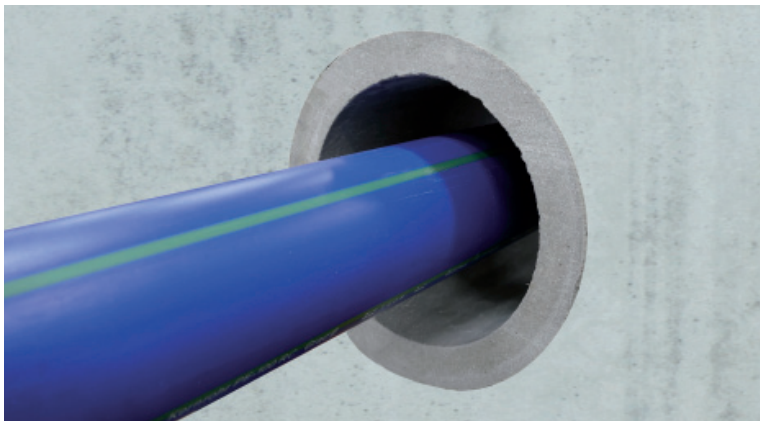
Standard UNIVERSAL
(from OD 250) closed



BlackLine UNIVERSAL
split



BlackLine UNIVERSAL
(from OD 250) split



1. Clean the casing pipe/core bore and carrier pipe.
2. Check the casing pipe/core bore diameter and carrier pipe diameter against sealing range data written on the Pressio® seal.



3. Count the slats to be removed for the corresponding pipe diameter.
If necessary, the seal can be split before subsequent installation.



4. To remove the slats, they are pressed through to the back and then cut off with a knife or pulled off by hand.

Type UNIVERSAL (from OD 250 mm)



Select the suitable reduction ring for the corresponding diameter of the carrier pipe and insert it into the inner diameter of the seal. For subsequent installation (Type BlackLine), the reduction ring can be split on site using a knife.

Installation guide

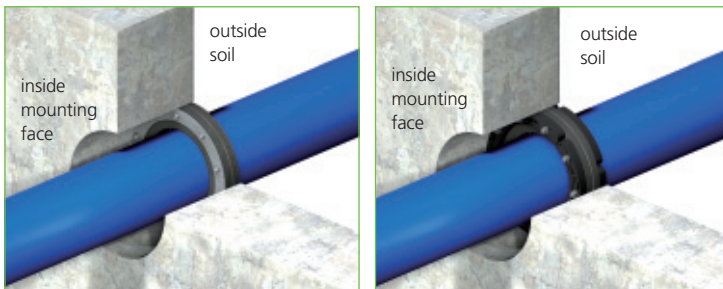
Pressio® Universal wall penetration seals 4 pipes



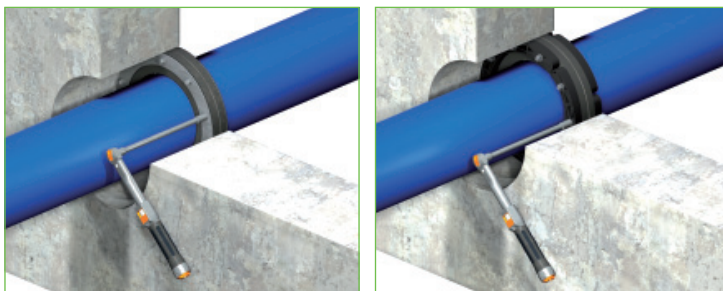
5. Push the seal on the carrier pipe.
For retrofitting reassemble the seal on the carrier pipe.

Attention:

Orientation of the nuts towards the inside of the building for later retightening.



6. Insert the Pressio® seal into the wall and place it flush with the outside of the building.

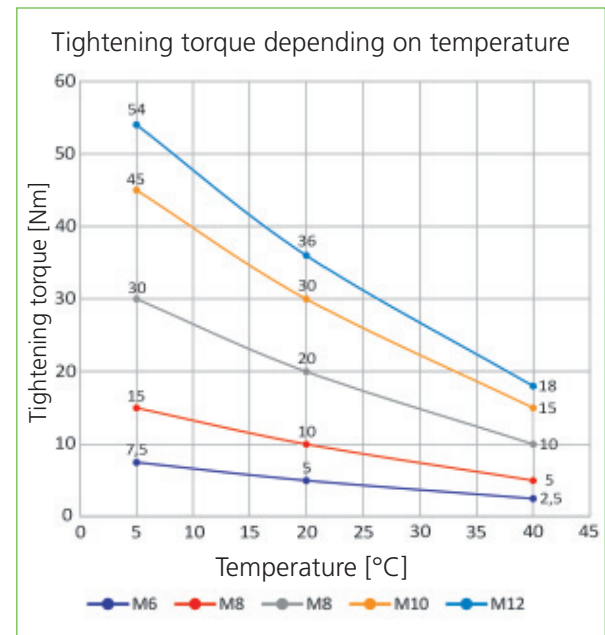


7. Use a torque wrench to tighten the nuts according to the below table.

Attention:

Tighten the nuts in a clockwise pattern. Each nut is to be turned approx. three times. Several passes will be necessary until the torque value is achieved. If necessary, retighten the nuts after 2 hours until the torque is reached.

Max. tightening torques in Nm		
Bolt	Standard pipes	For thin-walled plastic pipes
M 6	5 Nm	5 Nm
M 8	10 Nm for Pressio® Standard, Standard split, Standard Type FW and BlackLine	8 Nm for Pressio® Standard, Standard split, Standard Type FW and BlackLine
	20 Nm for Pressio® Individual and Pressio® Type KTWW270	15 Nm for Pressio® Individual
M 10	30 Nm	22 Nm
M 12	36 Nm	26 Nm



The 4 pipes warranty is limited to the replacement of faulty material. The usability of the product for the individual application is completely the responsibility of the user.



Installation video