

Sealing Sleeve - Type KMR 4 pipes

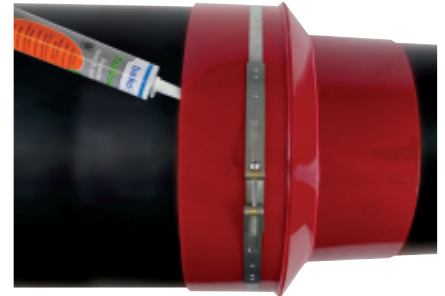
Application



1. Slide sealing sleeve over the pipe and casing



2. Fit the supplied steel strap with max. 10 Nm at the front end of the sleeve on the casing pipe



3. Fill the sealant all around under the sleeve

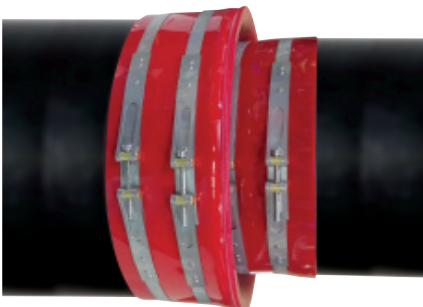


4. Fix second strap with **10 Nm** (smoothen escaping sealant).
Repeat step 2 to step 4 on the carrier pipe



5. Fully assembled sealing sleeve type KMR

6. The bolt strap needs to be retightened with **10 Nm after one hour**



Expansion direction S-shape mounting



Expansion direction stretched mounting



Before backfilling protect sealing sleeves with expansion-pads

Split-sleeve version is possible on request.
The installation can be carried out by DVS trained personnel.