

## Epoxy Coating Resin 4 pipes



### Product information

Epoxy resin 4 pipes is a high quality coating for surfaces, especially stonework, concrete or steel. **Core drilled holes at wall penetrations are coated to avoid entry of water into the wall.**

Epoxy resin 4 pipes comes in a kit which is suitable for sites, including safety gloves and an application brush. The two components are supplied in the right mixing ratio to be easily mixed together on site.

**After mixing in a pot, approx. 15 minutes remain** for a secure hand-ling of the total package. The surface to be coated has to be clean, dry (with concrete residual moisture <4%) and fat-free.

If the coating is used as a high-quality corrosion protection system on steel, the surface might need preparation with a degree of purity of SA 21/2 (sand blasting). For a correct hardening the surrounding temperature should be above 5°C and the relative humidity below 60%.

The product is applied with a brush. Up to 3 layers can be applied on top of each other. Depending on the layer thickness and surface roughness, a container of 1.0 kg is sufficient for about 3 square metres ±. Curing time is 12 to 24 hours depending on temperature.

Epoxy resin 4 pipes is highly suitable and approved for applications with drinking water.

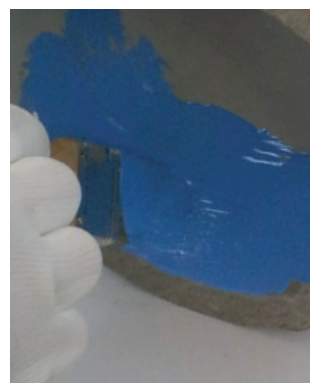
This material complies with the **UBA-BWGL and DVGW W270**. Before the first contact with drinking water the coating has to be flushed with hot water.

Electrical strength max. 9 KV / mm,  
Do pore test with max. 5 kV.

For your safety when applying it is necessary that:

- There is enough **fresh air**
- You wear **safety clothing** plus
- Safety goggles and gloves
- Safety data sheet on request

**Epoxy-Kit incl. brush and gloves**  
**4 pipes Art.-No. 13099 - 1.0 kg unit**



The 4 pipes warranty only applies to faulty material. Checking the suitability of the product for the individual application is solely the responsibility of the user.



## 1K Beto-coat 4 pipes



Art.-No. 13096  
0.75 ml can

### Product information

1K Beto-coat 4 pipes is a high quality coating for surfaces, especially concrete, stonework, steel and other materials. Core drilled holes at wall penetrations are coated to avoid entry of water into the wall.

1K Beto-coat 4 pipes comes in a kit which is **suitable for sites**, including safety gloves and an application brush. It consists of an alkyd-epoxy resin mixture and binds exceptionally strongly to the substrate. Good filling and covering capacity, rust-blocking, anti-corrosive, ventilating, productive.

As a one-component system, the can is **resealable after use** and the remaining container can be **used for the next application**.

### Processing

1K Beto-coat 4 pipes can be applied with a brush, roller or by spraying. The surface must be clean, free of grease and dust. Use on a slightly damp surface is possible.

Before applying, stir the contents of the can well until the resin mixture appears homogeneous. After that, the coating is applied on the surface. At least two layers of 1K Beto-coat are required to achieve the full coating quality.

### Technical data

Drying time	dust-dry after 30-45 minutes, able to paint over after 2-3 hours, nitro tight after 12 hours
Coverage	approx. 5 m <sup>2</sup> per litre
Thinner	use universal thinner to spray and clean the equipment

### Safety instructions

Use only in well-ventilated rooms. Do not inhale spray. Avoid contact with eyes. Keep out of the reach of children. Do not pour into drains. Flammable. Safety data sheet on request.

