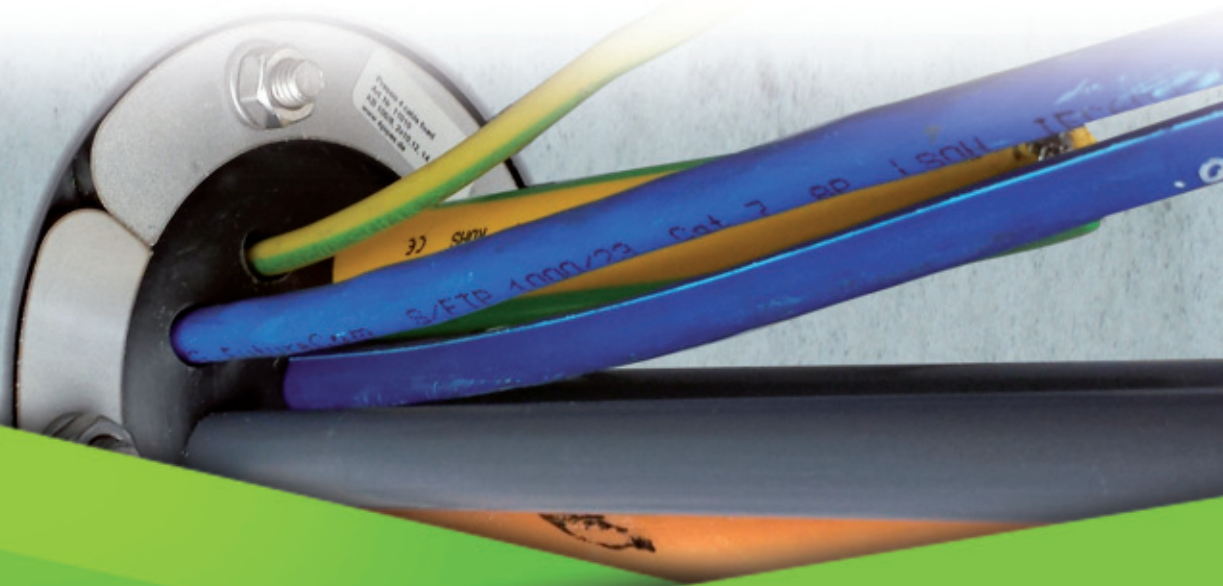
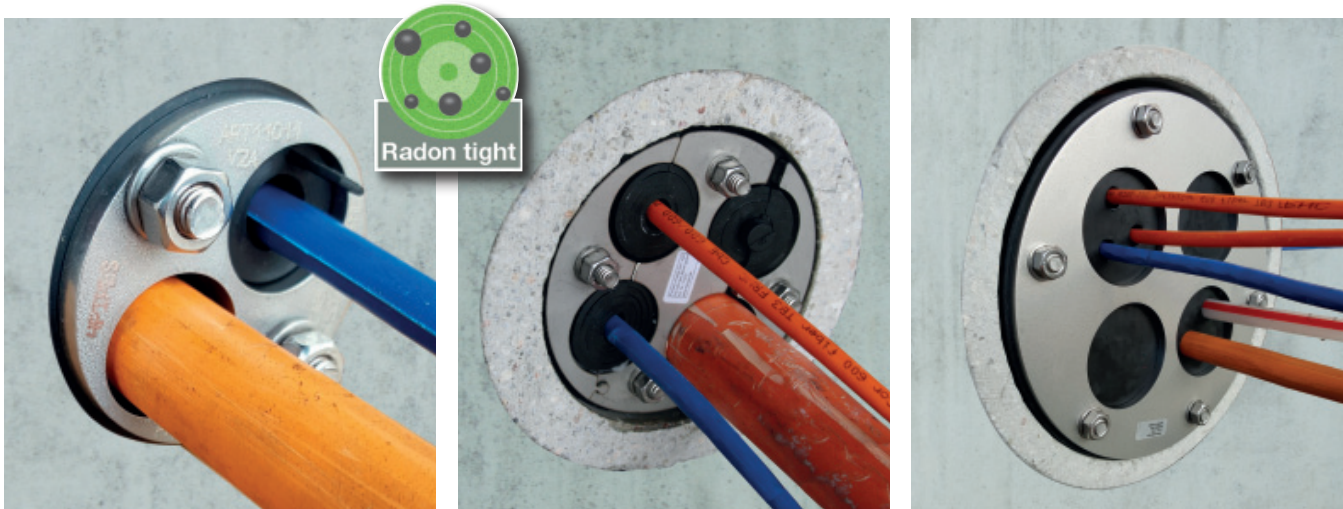




Pressio® 4 cables®  
Wall Penetration Seals



# Pressio® 4 cables® wall penetration seals



## Product information

The Pressio® Universal wall-penetration-seal 4 cables® is suitable as a **multiple seal** or a blind seal in wall-sleeves or core drilled holes.

The Pressio® Universal wall-penetration-seal 4 cables® is made as a secure seal protecting against high external water pressure for various **dimensions of cables or pipes** going through walls.

The sealing range of the **four single outlets** for cables or pipes is flexible for diameters between **6 and 32 mm\***. **Split rubber seals** in every individual outlet allow a flexible adjustment to the cable diameter and a retrofit application of the seal.

The **special „puzzle“ closure** avoids an opening of the seal during the application.

Individual cable and pipe penetrations of these diameters can be done within a very short time.

Multiple and single penetrations are possible. The seal is manufactured from high class EPDM rubber with stainless steel pressure plates made to withstand gas and high external water pressure. The rubber is especially soft (Shore A 45 ± 5) and elastic.

The pressure plates of the seal are **split** to enable subsequent installation on a pre-installed pipe.

Pressio® Seals 4 cables® are available for core holes of 50, 70, 80, 100, 125, 150 and 200 mm.

The cut **plugs are in the seal** when supplied and can be compressed. A later use as a blind seal is therefore possible.

Wall sleeves made of fibre cement, plastic or steel are available for Pressio® Seals 4 cables®.

## Advantages

- Easy feedthrough for multiple cables / carrier pipes in one core hole
- **Onion-ring inserts** for cables diameters of 6-50 mm\*
- Split seal, quick and easy to apply with **snap-in** closure
- Reduces required stock level
- Safe, fast installation
- Rubber with **double sealing** surface outside
- Tight up to 1.5 bar of high external water pressure
- Extension rings can be used on the OD to enlarge the diameter for special casing-pipe IDs

\* see exact sealing ranges of the versions

Technical data	
Material pressure plate	V2A *
Bolts	V2A *
Nuts	V4A
Rubber thickness	40 mm
Rubber quality	EPDM 45 ±5 Shore A
Temperature resistance	-30°C to +120°C

\* other qualities on request

## Overview variants

4 cables® UNIVERSAL	4 cables® FIXED	4 cables® CUSTOM
Onion ring technology allows a seal for different cable diameters	Seal with common cable dimensions, drilled in, with blind plugs	Individual cable / pipe penetrations can be cut into the seals at short notice. Closed or split on request

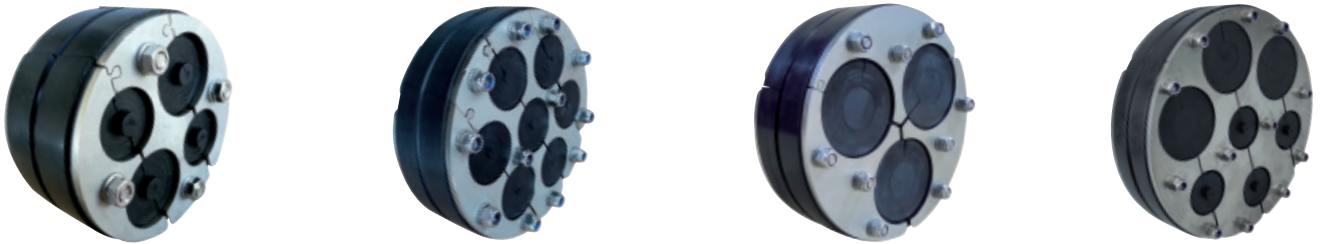
Pressio® 4 cables® UNIVERSAL - Onion ring technology		
Ø in mm	Product	Art.-No.
50	 <p><b>Pressio® 4 cables® UNIVERSAL OD 50 mm / 2x 6-16 mm, closed</b></p> <p>Pressure rating: 1.5 bar</p> <p>Supplied incl. blind plugs</p>	11011
100	 <p><b>Pressio® 4 cables® UNIVERSAL OD 100 mm / 18-65 mm, closed</b></p> <p>Possible cables-Ø: 18 up to 65 mm (in 5 mm steps per ring)</p> <p>Pressure rating: 1.5 bar</p> <p>Supplied incl. blind plug</p>	10490
100	 <p><b>Pressio® 4 cables® UNIVERSAL OD 100 mm / 18-20, 25, 32, 40, 50, 63 mm, split</b></p> <p>Pressure rating: 1.5 bar</p> <p>Supplied incl. blind plug</p>	10499
100	 <p><b>Pressio® 4 cables® UNIVERSAL OD 100 mm / 4x 6-30 mm, split, EPDM</b></p> <p>ID slats: 4x 6, 10, 14, 18, 22, 26, 30 mm (sealing range from 3.5 mm upward)</p> <p>Pressure rating: 1.0 bar</p> <p>Supplied incl. 4 pcs. blind plugs</p>	11020
	<p><b>Identical in construction, rubber NBR</b></p>	11024
100	 <p><b>Pressio® 4 cables® UNIVERSAL OD 100 mm / 2x 6-32 mm, 2x 6-26 mm, split</b></p> <p>ID slats: 2x 6, 10, 14, 18, 22, 26, 30, <b>32 mm</b> 2x 6, 10, 14, 18, 22, <b>26 mm</b> (sealing range from 3.5 mm upward)</p> <p>Pressure rating: 1.0 bar</p> <p>Supplied incl. 4 pcs. blind plugs</p>	11021
100	 <p><b>Pressio® 4 cables® UNIVERSAL OD 100 mm / 25-50 mm, 2x 6-16 mm, closed</b></p> <p>ID slats: 25, 30, 35, 40, 45, 50 mm 2x 10, 16 mm (sealing range from 6 mm upward)</p> <p>Pressure rating: 1.0 bar</p> <p>Supplied incl. blind plugs</p>	11014

## Pressio® 4 cables® UNIVERSAL - Onion ring technology

Ø in mm	Product	Art.-No.
150	  <p><b>Pressio® 4 cables® UNIVERSAL OD 150 mm / 32, 40, 50, 63, 76, 90, 110 mm, closed</b></p> <p>Possible cables-Ø: 32, 40, 50, 60.3 up to 63 mm, 75 up to 76.1 mm, 88.9 up to 90 mm, 110 mm</p> <p>Pressure rating as blind closure: for low external water pressure Pressure rating with cable/carrier pipe: 1.0 bar</p> <p>Supplied incl. blind plug</p>	10495
150	 <p><b>Pressio® 4 cables® UNIVERSAL OD 150 mm / 3x 25-50 mm, closed</b></p> <p>ID slats: each 25, 30, 35, 40, 45, 50 mm (sealing range from 22 mm upward)</p> <p>Pressure rating: 1.0 bar</p> <p>Supplied incl. blind plugs</p>	11025
150	 <p><b>Pressio® 4 cables® UNIVERSAL OD 150 mm / 3x 25-50 mm, split</b></p> <p>ID slats: each 25, 30, 35, 40, 45, 50 mm (sealing range from 22 mm upward)</p> <p>Pressure rating: 1.0 bar</p> <p>Supplied incl. blind plugs</p>	11026
150	 <p><b>Pressio® 4 cables® UNIVERSAL OD 150 mm / 7x 5-32 mm, split</b></p> <p>ID slats: each 5, 10, 15, 20, 25, 32 mm (sealing range from 3 mm upward)</p> <p>Pressure rating: 1.0 bar</p> <p>Supplied incl. blind plugs</p>	11027
200	  <p><b>Pressio® 4 cables® UNIVERSAL OD 200 mm / 110, 125, 140, 160 mm, closed</b></p> <p>Possible cables-Ø: 110, 125 mm 139.7 up to 140 mm, 160 mm</p> <p>Pressure rating as blind closure: for low external water pressure Pressure rating with cable/carrier pipe: 1.0 bar</p> <p>Supplied incl. blind plug</p>	10493
200	 <p><b>Pressio® 4 cables® UNIVERSAL OD 200 mm / 3x 25-50 mm, 4x 5-32 mm, split</b></p> <p>ID slats DN 50: each 25, 30, 35, 40, 45, 50 mm (sealing range from 22 mm upward)</p> <p>ID slats DN 32: each 5, 10, 15, 20, 25, 30 mm (sealing range from 3 mm upward)</p> <p>Pressure rating: 1.0 bar</p> <p>Supplied incl. blind plugs</p>	11028

# Installation guide

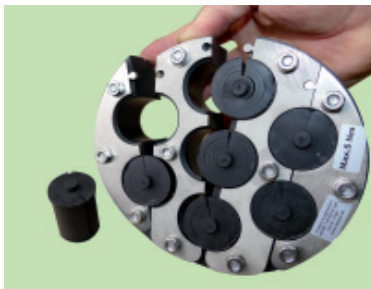
## Pressio® 4 cables® UNIVERSAL wall penetration seals



Pressio® 4 cables® UNIVERSAL closed/split



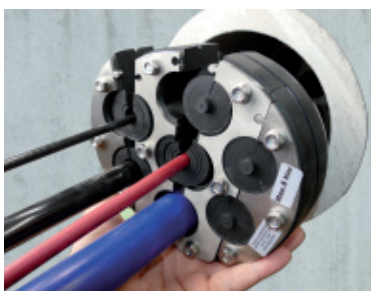
1. Clean the casing pipe/core bore and carrier pipe.
2. Check the casing pipe/core bore diameter and carrier pipe diameter against sealing range data written on the Pressio® seal.



3. Count the slats to be removed for the corresponding pipe diameter.



4. To remove the slats, they are pressed through to the back and then cut off with a knife or pulled off by hand.



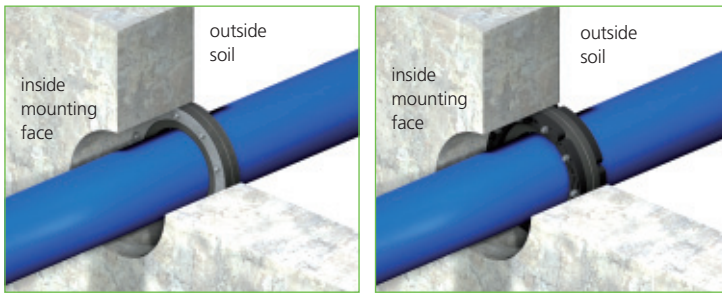
5. Insert carrier pipes or cables in the prepared feedthroughs.

**Attention:**

Orientation of the nuts towards the inside of the building for later retightening.

# Installation guide

## Pressio® 4 cables® UNIVERSAL wall penetration seals



6. Insert the Pressio® seal into the wall and place it flush with the outside of the building.

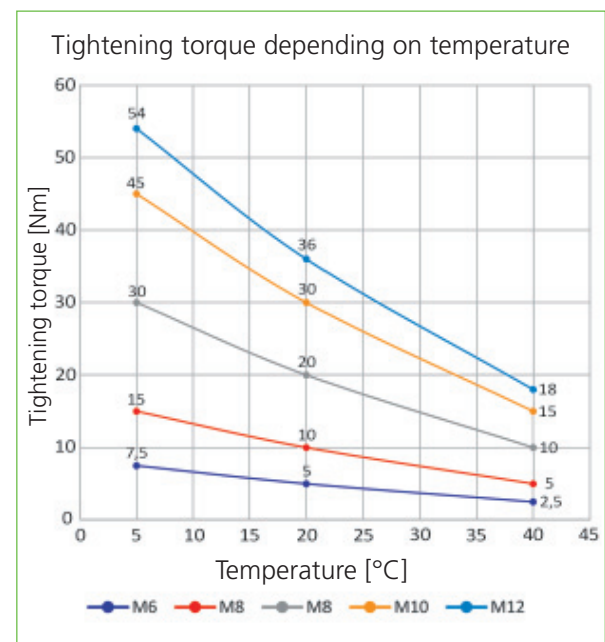


7. Use a torque wrench to tighten the nuts according to the below table.

**Attention:**

Tighten the nuts in a clockwise pattern. Each nut is to be turned approx. three times. Several passes will be necessary until the torque value is achieved. If necessary, retighten the nuts after 2 hours until the torque is reached.

Max. tightening torques in Nm		
Bolt	Standard pipes	For thin-walled plastic pipes
M 6	5 Nm	5 Nm
M 8	10 Nm for Pressio® Standard, Standard split, Standard Type FW and BlackLine	8 Nm for Pressio® Standard, Standard split, Standard Type FW and BlackLine
	20 Nm for Pressio® Individual and Pressio® Type KTW/W270	15 Nm for Pressio® Individual
M 10	30 Nm	22 Nm
M 12	36 Nm	26 Nm




The 4 pipes warranty is limited to the replacement of faulty material. The usability of the product for the individual application is completely the responsibility of the user.

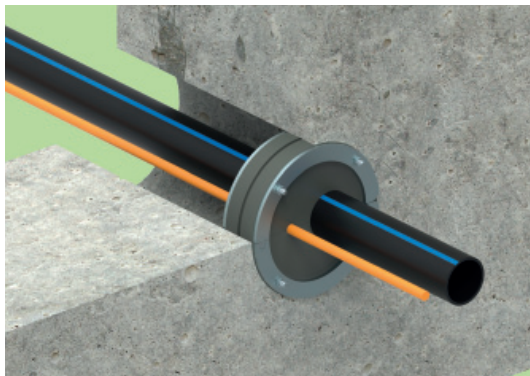


Installation video

Pressio® 4 cables® FIXED - fixed sizes			
Ø KB	Product		Art.-No.
50		<p><b>Pressio® 4 cables® FIXED OD 50 mm / 2x 10-16 mm, split</b></p> <p>Pressure rating: 1.5 bar</p> <p>Supplied without blind plugs</p>	11012
100		<p><b>Pressio® 4 cables® FIXED OD 100 mm / Openings 8, 2x10, 12, 14, 16, 18 mm, closed or split</b></p> <p>Pressure rating: 1.5 bar</p> <p>Supplied incl. blind plugs</p>	11010
100		<p><b>Pressio® 4 cables® FIXED OD 100 mm / 32 mm and 2x 7 mm, closed</b></p> <p>Pressure rating: 1.5 bar</p> <p>Supplied incl. blind plugs</p>	11013
100		<p><b>Pressio® 4 cables® FIXED OD 100 mm / 2x 40 mm and 2x 32 mm, split</b></p> <p>*a suitable Pressio® Reduction Inlay 40 mm to 32 mm is optional available</p> <p>Pressure rating: 1.5 bar</p> <p>Supplied without blind plugs</p>	11017
100		<p><b>Pressio® 4 cables® FIXED OD 100 mm / 2x 40 mm and 2x 32 mm, split</b></p> <p>*a suitable Pressio® Reduction Inlay 40 mm to 32 mm is optional available</p> <p>Pressure rating: 1.5 bar</p> <p>For KG- and KG2000 pipe DN 100</p> <p>Supplied without blind plugs</p>	11018
		<p><b>Pressio®-Reduction Inlay 40 mm to 32 mm</b></p> <p>*suitable for Pressio® sealings with ID 40 mm</p>	08120
150		<p><b>Pressio® 4 cables® FIXED OD 150 mm / 3x 50 mm, closed</b></p> <p>Pressure rating: 1.0 bar</p> <p>Supplied without blind plugs</p>	11080
150		<p><b>Pressio® 4 cables® FIXED OD 150 mm / 3x 50 mm, split</b></p> <p>Pressure rating: 1.0 bar</p> <p>Supplied without blind plugs</p>	11081

Pressio® 4 cables® CUSTOM - drilled outlets			
Ø in mm	Product		Art.-No.
50	 <p>The seal will be custom drilled. Please order the seal with information about exact cable diameters and quantity of cables.</p>	<p><b>Pressio® 4 cables® CUSTOM OD 50 mm, closed or split</b> (Price incl. 2 outlets)</p> <p>ID-pressure plate: 22 mm Possible cables-Ø: 2 up to 19 mm Pressure rating: 1.5 bar</p> <p>Please specify when ordering: - closed or split - Cable / carrier pipe diameter</p>	11000
70		<p><b>Pressio® 4 cables® CUSTOM OD 70 mm, closed or split</b> (Price incl. 2 outlets)</p> <p>ID-pressure plate: 43 mm Possible cables-Ø: 2 up to 40 mm Pressure rating: 1.5 bar</p> <p>Please specify when ordering: - closed or split - Cable / carrier pipe diameter</p>	11005
80		<p><b>Pressio® 4 cables® CUSTOM OD 80 mm, closed or split</b> (Price incl. 2 outlets)</p> <p>ID-pressure plate: 43 mm Possible cables-Ø: 2 up to 40 mm Pressure rating: 1.5 bar</p> <p>Please specify when ordering: - closed or split - Cable / carrier pipe diameter</p>	11001
100		<p><b>Pressio® 4 cables® CUSTOM OD 100 mm, closed or split</b> (Price incl. 2 outlets)</p> <p>ID-pressure plate: 66 mm Possible cables-Ø: 2 up to 50 mm Pressure rating: 1.5 bar</p> <p>Please specify when ordering: - closed or split - Cable / carrier pipe diameter</p>	11002
125		<p><b>Pressio® 4 cables® CUSTOM OD 125 mm, closed or split</b> (Price incl. 2 outlets)</p> <p>ID-pressure plate: 82 mm Possible cables-Ø: 2 up to 63 mm Pressure rating: 1.5 bar</p> <p>Please specify when ordering: - closed or split - Cable / carrier pipe diameter</p>	11003
150	<p><b>Pressio® 4 cables® CUSTOM OD 150 mm, closed or split</b> (Price incl. 2 outlets)</p> <p>ID-pressure plate: 112 mm Possible cables-Ø: 2 up to 63 mm Pressure rating: 1.5 bar</p> <p>Please specify when ordering: - closed or split - Cable / carrier pipe diameter</p>	11004	

Example:  
Pressio® 4 cables® CUSTOM OD 100 mm,  
with 2 drilled outlet




Pressio® 4 cables® CUSTOM installation example

The cut-out plugs remain in the seal and can be used as blind plugs.  
A later assignment of the blind plug is possible.



# Pressio® 4 cables® wall penetration seals

Pressio® 4 cables® CUSTOM - drilled outlets		
Ø in mm	Product	Art.-No.
200	  <p><b>Pressio® 4 cables® CUSTOM OD 200 mm, closed</b> (Price incl. 2 outlets)</p> <p>ID-pressure plate: 2x 56 mm, 2x 70 mm Possible cables-Ø: 2x 2 up to <b>50 mm</b> 2x 2 up to <b>63 mm</b> Pressure rating: 1.5 bar</p> <p>Please specify when ordering: - Cable / carrier pipe diameter</p>	11006
	each additional drilled outlet	11015

Pressio® 4 cables® FIXED BlackLine		
Ø in mm	Product	Art.-No.
100	 <p><b>Pressio® 4 cables® FIXED BlackLine OD 100 mm/ Outlets 8, 2x10, 12, 14, 16, 18 mm split</b></p> <p>Pressure rating: 1.5 bar Supplied incl. blind plugs</p>	55010

**Please note:**

- A core drilled hole can be coated with our **epoxy-resin (Art.-No. 13099)** to protect the concrete and smoothen over any holes or scratches.
- Cables/carrier pipes should be supported.
- **4 pipes lubricant (Art.-No. 09599)** helps sliding the seal over the cables and carrier pipes.



If necessary, leave the blind plug in the gasket

# Installation guide Pressio® 4 cables® FIXED and CUSTOM wall penetration seals



Standard 4 cables® FIXED  
closed/split  
without blind plugs



Standard 4 cables® FIXED und CUSTOM  
closed/split  
with blind plugs



BlackLine 4 cables® FIXED  
split  
with blind plugs



1. Clean the casing pipe/core bore and carrier pipe.
2. Check the casing pipe/core bore diameter and carrier pipe diameter against sealing range data written on the Pressio® seal.

## For subsequent installation - on-site splitting if possible

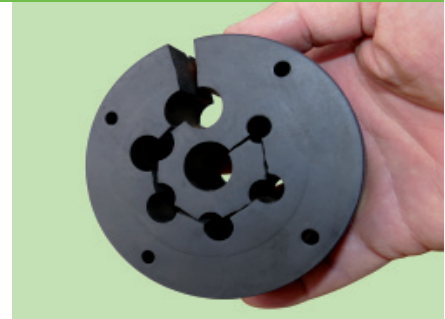


3a. Disassemble sealing completely



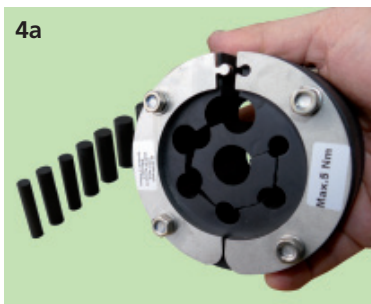
3b. If necessary, cut sealing rubber with a knife.

**Attention:** Splitting cut at the 12 o'clock position must correspond with the puzzle fastener.

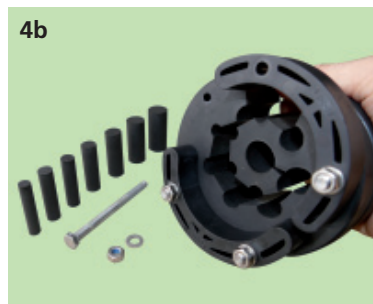


3c. Ready split sealing rubber

## Reassemble sealing afterwards



4a



4b

### 4a. Type Standard split:

Open the seal at the intended location (Puzzle fastener)

### 4b. Type BlackLine split:

Remove only one bolt at the split section.

If present, remove all unused blind plugs.

# Installation guide Pressio® 4 cables® FIXED and CUSTOM wall penetration seals



5a. Insert carrier pipes or cables in the prepared feedthroughs.

5b. Type BlackLine split:  
Reassemble the seal on the carrier pipes/cables.

**Attention:**

Orientation of the nuts towards the inside of the building for later retightening.  
Reinsert blind plugs in unused openings.



6. Push the Pressio® seal into the casing pipe or the core bore.



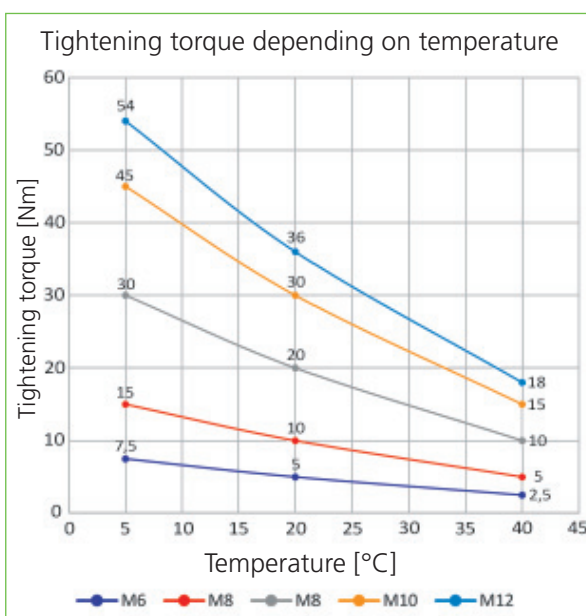
7. Insert the Pressio® seal into the wall and place it flush with the outside of the building.



8. Use a torque wrench to tighten the nuts according to the below table.

**Attention:** Tighten the nuts in a clockwise pattern. Each nut is to be turned approx. three times. Several passes will be necessary until the torque value is achieved. If necessary, retighten the nuts after 2 hours until the torque is reached.

Max. tightening torques in Nm		
Bolt	Standard pipes	For thin-walled plastic pipes
M 6	5 Nm	5 Nm
M 8	10 Nm for Pressio® Standard, Standard split, Standard Type FW and BlackLine	8 Nm for Pressio® Standard, Standard split, Standard Type FW and BlackLine
	20 Nm for Pressio® Individual and Pressio® Type KTW/W270	15 Nm for Pressio® Individual
M 10	30 Nm	22 Nm
M 12	36 Nm	26 Nm



The 4 pipes warranty is limited to the replacement of faulty material. The usability of the product for the individual application is completely the responsibility of the user.